



Leveraging Campus Partnerships to Increase Access & Inclusive Programming



Session Presenters



Dominique Brown
Program Manager, Study Abroad
DePaul University



Marnie Nelson
Associate Director, Education Abroad Office
University of Nebraska-Lincoln

What We'll Cover

Collaborating across your campus to...

- Create partnerships and build relationships
- Design inclusive, global experiences
- Develop DEI workshops for faculty and staff leaders



CONFIDENTIAL

Creating Cross-Campus Collaborations

Research

- Understand and examine your underrepresented student population
 - Who are they?
 - What are their needs?
 - What are their perceptions?
 - What are their barriers?
 - How can your office support?

Infrastructure

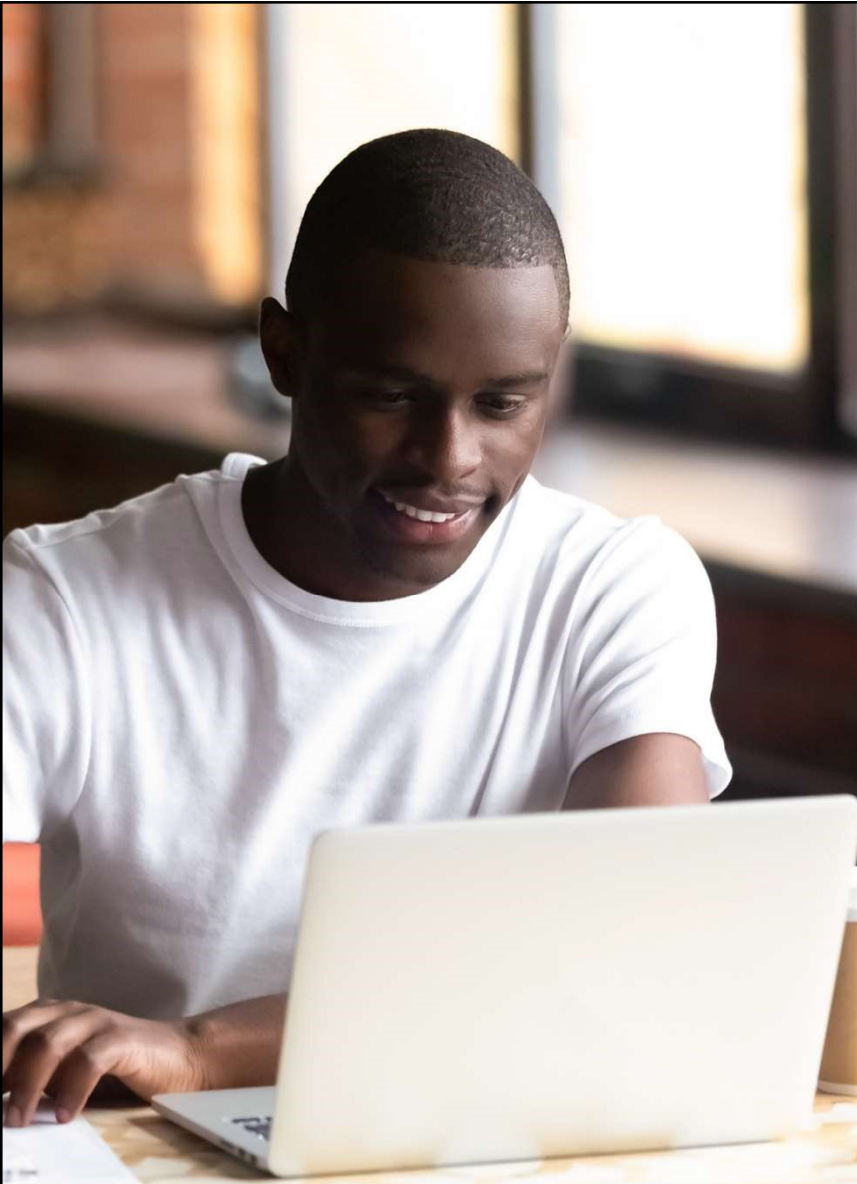
- Form diversity committee
- Develop goals based on research
- Create and implement DEI training plan for your office and stakeholders

Relationship Building

- Develop and implement outreach plan to university stakeholders who work with underrepresented student populations AND student services offices
- Build trust and focus on common goals
- Reciprocating approach
- Long-term approach

Finding Opportunities

- Getting buy-in from higher administration and support offices
- Join university-wide committees on DEI to build relationships
- Approaching the right stakeholders
- Researching and securing institutional funds
- Presenting at DEI related conferences to build your professional portfolio



Resources for Students

University of Nebraska-Lincoln

- Website with resources for multiple student identities built in coordination with student services offices on campus
 - Coming Soon: Heritage Seeking Students, reinforcing intersectional identities
 - The collaboration on the webpages with student services offices is *another* success!
- Building handouts for LGBTQA+ Office, Office for Services for Students with Disabilities and Military & Veteran Success Center specific to global experiences - “myth busting” specific to students in these communities.
- Working on a video for Identities Abroad - Universities of Wisconsin-Madison and University of Minnesota have *great* videos on YouTube.

Example (to be published soon)

Are you interested in participating on an experience abroad?

Do you have questions about accommodations available to students studying, interning or researching abroad?

Are you looking to have a global experience in a location that is accessible?

You don't have to be registered with SSD to get support and advice! You can have a confidential discussion about your disability and going abroad even if you are not registered!

CONTACT US

Education Abroad Office
110 Love South
402-472-5358
educationabroad.unl.edu

educationabroad@unl.edu
UNLEduAbroad
unleducationabroad

Supporting Students on Global Experiences: Services for Students with Disabilities

Education Abroad Office

EDUCATION ABROAD IS POSSIBLE

You will have the chance to seek new opportunities, broaden your perspective, build global competence and gain professional skills. Managing your disability abroad can be a significant source of growth, challenge, and reflection in a new and unfamiliar environment. You may already be familiar with navigating challenges associated with your disability on campus, but there will likely be a different context to negotiate in your host culture. When preparing for an education abroad experience, it is important to ensure the country you are traveling to will meet your academic and personal needs and offer support. Please contact the Education Abroad Office to discuss programs that will be a best fit!



Resources:

Diversity Abroad
Education Abroad Website - *Identities Abroad*
Education Abroad Website - *Travel Logistics*
Mobility International

Opportunities to go abroad are available to students of all identities.

QUESTIONS TO ASK

Education Abroad Office

- How does the academic environment abroad differ from the environment here at UNL?
- How much onsite support is offered in your host city, university and academic environment?
- What type of housing is available in my destination country?

Office for Services for Student with Disabilities (SSD)

- What is the process for learning more about support available to me while I am abroad?
- What resources or other tools that could help me abroad?
- Can I request accommodations for my experience abroad if I am not currently registered with SSD?

Counseling and Psychological Services (CAPS)

- What plans can I make now to manage new challenges I might face abroad?
- What strategies and resources can I access here on campus and what will be available to support me abroad?

Summary: Cross-Campus Partnerships

KEY TAKEAWAYS TO GETTING STARTED

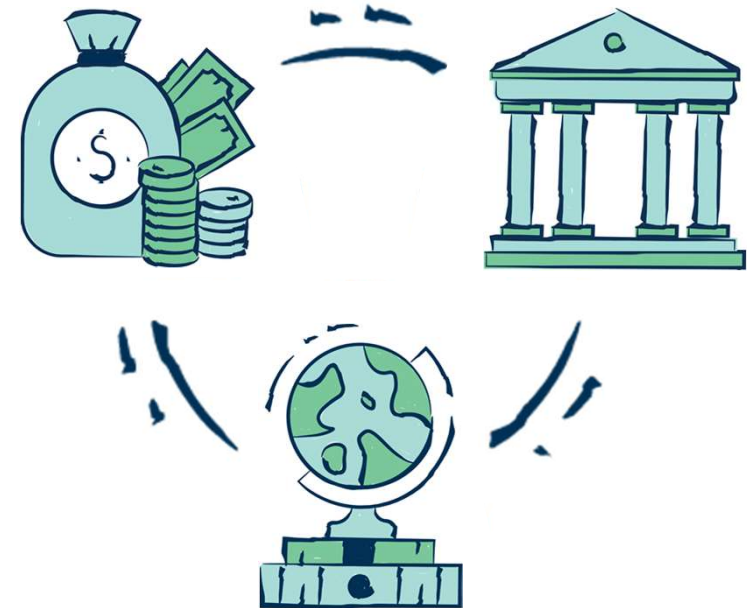
- Identify the needs, wants, and hurdles of underrepresented students
- Meet students where they are: create diversity committee and partner with student organizations & stakeholders who represent these students
- Develop inclusive programming that addresses hurdles: cost, degree requirements, subject matter, etc.
- Develop faculty workshops that ties into larger university certification(s) to increase attendance



Collaborating to Create Inclusive, Global Experiences

Tools for Building Sustainable Access

- Financial Model
 - Funding or subsidize program costs
 - Identifying low-cost programming
- Curricular Model
 - Identify courses that fulfill core requirements for most students
- Program Model
 - Develop program that addresses needs of students
 - Destination
 - Attractive Topics/Themes
 - Glo-cal, local and virtual programs
 - Social justice focus or identity based programs





Inclusive Global Experiences

DePaul University

- **Identities Abroad**
 - Three programs
 - Subsidized, low-cost programming
 - Focused on first generation, students of color, and students with high financial need
 - Program course is a degree requirement for most students
 - Required training for program leaders focused on DEI topics
- **Virtual Study Abroad**
 - Created due to COVID, but evolved to new programming: Virtual Global Study
 - Study abroad experience without traveling abroad
 - No additional costs to students except for normal tuition costs
 - Incorporating projects with international contacts, online cultural activities, networking, international speakers

New Global Experiences

University of Nebraska-Lincoln

Glo-cal

- “Food and Culture”: 40 students in Fall Semester 2021
- “Becoming American: How Identities Are Created & Re-Created”: 40 students in Fall Semester 2021
- “Ethnographic Field School: Garden, Food and Community Outreach with Yazidi Farmers”: Summer 2021
- Moving into domestic programs for Spring 2022 Semester
- No additional cost to students in Summer 2021 and Fall 2021.

Virtual

- Access! Possible and successful! No additional cost to students in Summer 2021 and Fall 2021.
- “The Exploration of Brazil: The Impact That Systemic Racism Has on Families, Communities and Schools”
 - Virtual Host Families!

Identity-centric

- e.g. BLM abroad
- Programs in the future focused on these topics

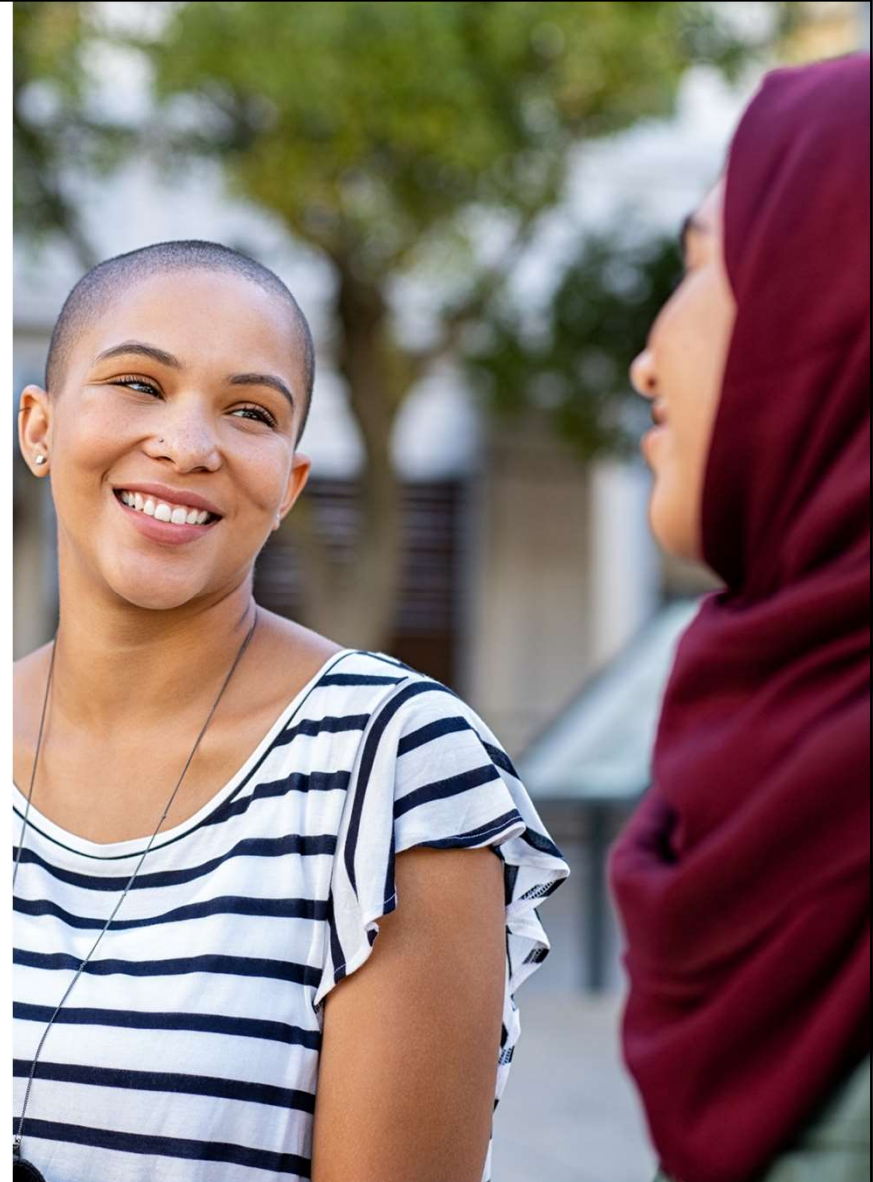


CONFIDENTIAL

Summary: Inclusive Programming

KEY TAKEAWAYS TO PUSH FURTHER

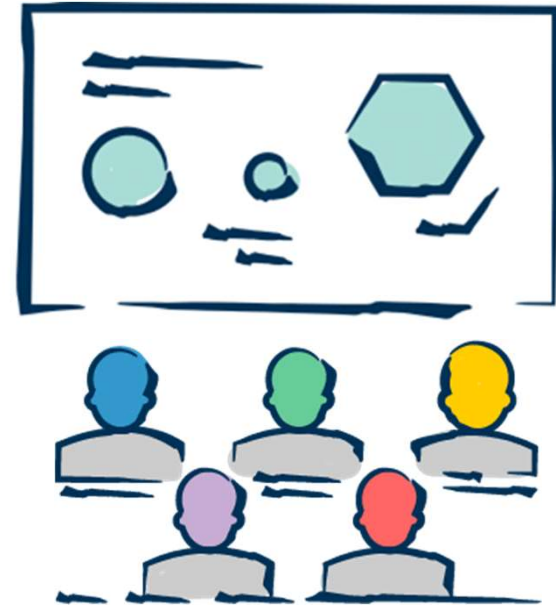
- In addition to student preparation, consider the program model and the in-country experience for students
- Create space for planned vs unplanned discussions in context with destination and identities
 - Guide faculty and staff leaders on *how* to do this!
- Create reflection questions to help students examine their surroundings
- Help faculty self-identify as *facilitator* not the content expert of the conversation
- Encourage students to reflect or comment on their identities while abroad in real-time discussions or journals



Collaborating on DEI Faculty Workshops

Getting Started

- Create DEI training relevant to supporting underrepresented student populations
- Tie into larger university DEI goals and objectives
- Work with university partner offices
- Identify faculty to support DEI initiatives; ask colleagues to co-present
- Outline intersection between international education and DEI
- Identify and implement DEI training for study abroad staff





DEI Faculty & Staff Workshops

HELPFUL RESOURCES TO INCLUDE

- Include takeaways (projects, discussion questions, activities, etc.) that faculty and staff can easily implement on their programs
- The more voices, the better! Invite staff from other student services offices and returnee leaders to present with you!
- Encourage faculty to recruit alumni from the program to share their voices in the pre-departure process
- Make sure you have cultural informants in country ready to assist leaders!

Diversity Advantage of Education Abroad

1. Outcomes of faculty-led programs: course content & cultural content – *include DEI*
2. Addressing needs of Gen Z students
3. Fostering intercultural competence
4. Supporting student identity development
5. Intersection of international education & diversity and inclusion
6. How do we turn this into a skill students can put on their resumes?





CERTIFIED LEADER

HAS SUCCESSFULLY ATTENDED FACULTY LEADER WORKSHOPS IN
PREPARATION FOR THEIR PROGRAM ABROAD.
CERTIFICATION WILL BE ACTIVE THROUGH 2024.

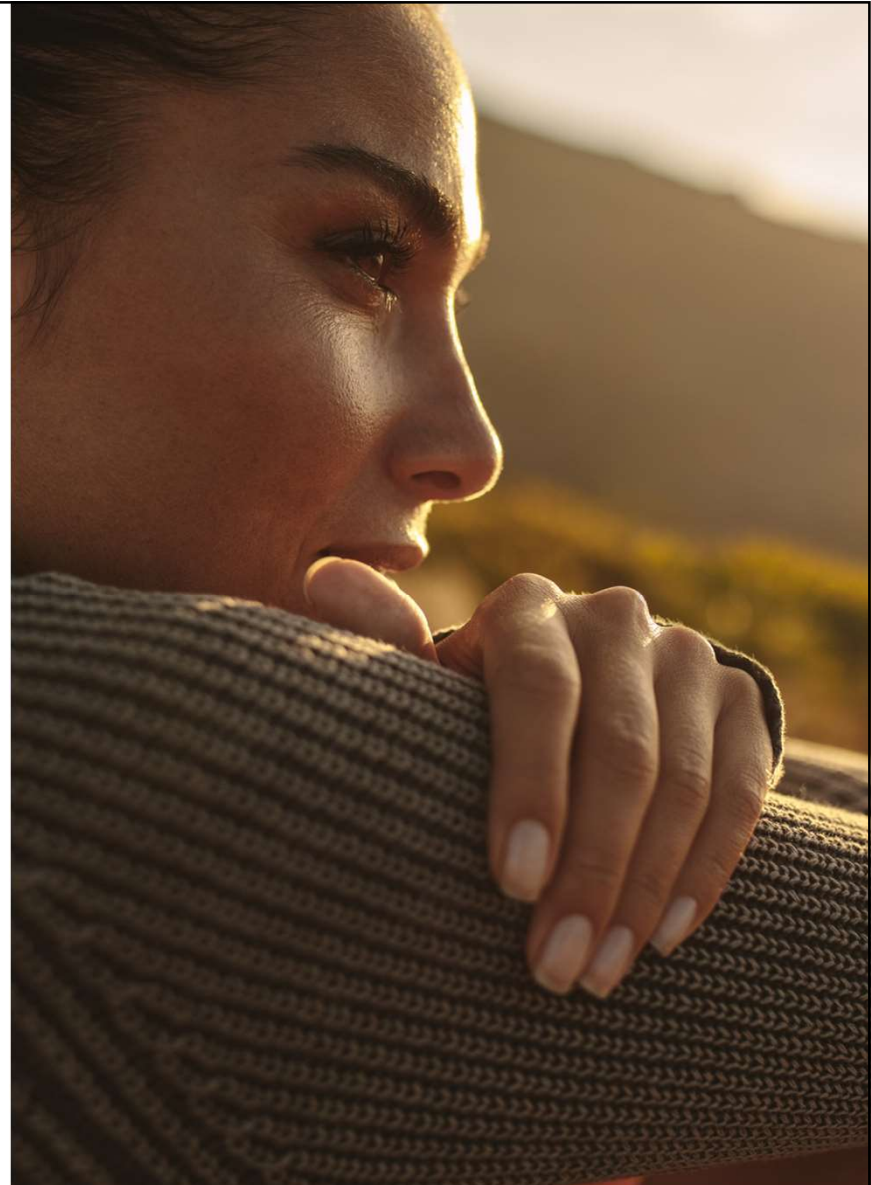
PRESENTED BY



DIRECTOR, EDUCATION ABROAD

Challenges

- Including conversations about DEI in pre-departure material specific to each location - HUGE challenge!
 - Resources from the field: Culture & Diversity Country Guides from Diversity Abroad
- Encouraging students to research resources about their own identities abroad prior to departure
- Intersectional identities and complexity of every individual student, individual
- Remember that personal reflection and challenges are positive outcomes of global experiences
- Be careful to not replace mission of other student services offices on campus





Inclusive Programming

POTENTIAL REFLECTION QUESTIONS

- Bridging the course content with relevant cultural learning: Are there opportunities within the course content to discuss elements of students' identities? Are there guest lectures on evidence of systemic racism in the host country? Have the students observe the physical landscape of the host city - is it accessible? Are there curb cuts?
- Are there a multitude of faiths represented within the host city (temples, synagogues, churches, cathedrals)?
- Do students of different genders have different experiences in restaurants?
- Are students with mobility concerns able to fully engage in all program experiences? If not, openly discuss it with students.
- Discuss and debrief students' experiences at Passport Control/Customs - was it the same for all students?