



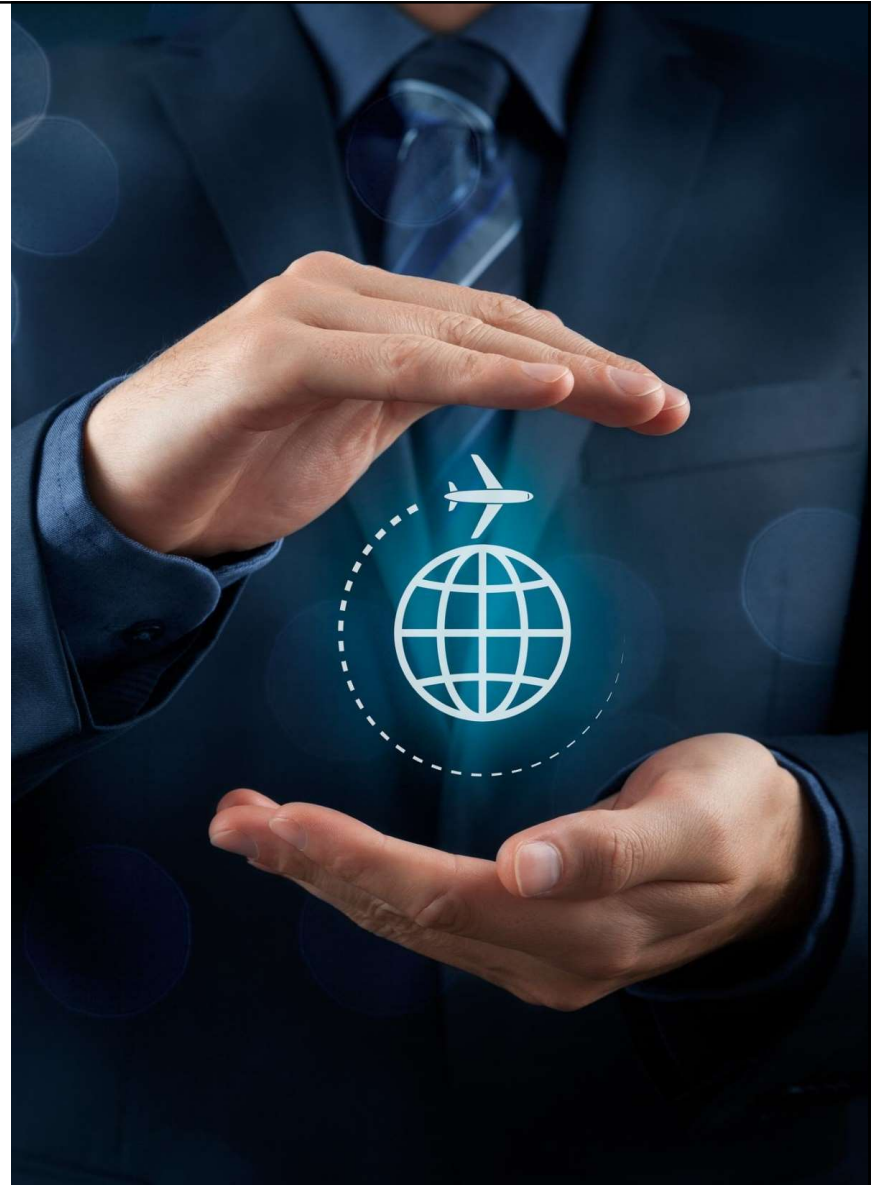
Planning for “What If”

A Look at Travel Protection
in the Pandemic Era



Overview

- WorldStrides Liability Insurance
- WorldStrides Medical Insurance
- Optional: Travel Protection Base Plan
- Optional: Ultimate Travel Protection Plan
- Case Studies
- Key Takeaways



CONFIDENTIAL

Included Liability Insurance

\$50 Million Policy

- Your institution named as additional insured
- Includes...
 - Commercial General Liability
 - Professional Liability
 - Umbrella for Excess Liability
 - Worker's Compensation
 - Automobile



Included Medical Insurance: International Programs (< 30 days)

Included and required for all participants

- Medical Expense Benefit: up to \$100K
 - Per covered accident or sickness
 - \$100 Deductible
- Mental Wellness covered at 100%
- Emergency Reunion Benefit: up to \$5K
- Emergency Medical Evacuation Benefit: up to 100% of covered expenses
- Security Evacuation Expense Benefit: up to \$100K
- Trip Interruption Benefit: up to \$2,500
- Hotel Convalescence Benefit: up to \$100/day (5 days)



Doctors on Call
Dr. Neal Sikka
In partnership with George Washington University



On-Call Success
WorldStrides
24-hour support

Optional Undergraduate Travel Protection Base Plan

\$149 per participant for (US citizens, US & Canadian residents only)

- Plan can be purchased up until the final payment date at 45 days prior to start of the program
- Includes enhanced medical benefits: \$50,000 accident & medical
- Payout at 100% of non-refundable program costs for “covered reasons” including:
 - Death of a family member before departure,
 - Terrorist event occurs within 30 days at city(s) named on your itinerary,
 - Documented theft of passport or visa(s), and more.
- Includes 24-hour on-call assistance services
- **Note: does not include a “Cancel for Any Reason” benefit waiver**

Optional Ultimate Travel Protection Plan

*Plan pending
final review*

\$279 per participant for (US citizens, US & Canadian residents only)

- Best protection plan to protect students' education abroad investment
- Includes all benefits of the Travel Protection Base Plan
- **Plus it includes “Cancel for Any Reason” (CFAR) benefit waiver – 75% recovery of non-refundable program costs (self-insured by WorldStrides)**
 - University suspends or bans all international travel
 - International borders are closed, no flights to program destination(s), or required quarantine upon arrival
- **Purchase requirements and terms to utilize CFAR Benefit Waiver:**
 1. Enrollment and Payment for this plan must be received by WorldStrides within 14 days of the program confirmation **AND** at least 60 days prior to your scheduled program departure date;
 2. You must cancel at least 3 days before your scheduled program departure date
- Cash payouts distributed in a timely manner upon completing cancellation process

Hypothetical Case Study: New Quarantine Restriction

	Without Ultimate Protection	With Ultimate Protection
Ground Program Price per Student	\$2,500	\$2,500
Undergraduate Ultimate Travel Protection Plan*	\$0	\$279
1) Total Education Abroad Investment per Student	\$2,500	\$2,779
Cancellation Reason	New Quarantine Restriction	New Quarantine Restriction
Cancellation Date (Day Prior to Departure)	40	40
WorldStrides Cancellation Recovery %	50%	50%
2) WorldStrides Refund	\$1,250	\$1,250
Potential to Reroute	Not Covered	Not Covered
Protection Plan Benefit Recovery %	0%	75%
3) Protection Plan Benefit Payout	\$0	\$938
Total Program Cost Recovery %	50%	87.5%
Total Program Cost Not Recovered	(\$1,250)	(\$312)
4) Total Program Cost Recovered	\$1,250	\$2,188

**Please note: the cost of insurance is never refundable or eligible for a refund when cancelling*

Hypothetical Case Study: University Suspends All International Travel

	Without Ultimate Protection	With Ultimate Protection
Ground Program Price per Student	\$2,500	\$2,500
Undergraduate Ultimate Travel Protection Plan*	\$0	\$279
1) Total Education Abroad Investment per Student	\$2,500	\$2,779
Cancellation Reason	University Travel Suspended	University Travel Suspended
Cancellation Date (Day Prior to Departure)	7	7
WorldStrides Cancellation Recovery %	0%	0%
2) WorldStrides Refund	\$0	\$0
Potential to Reroute	Unable to reroute	Unable to reroute
Protection Plan Benefit Recovery %	0%	75%
3) Protection Plan Benefit Payout	\$0	\$1,875
Total Program Cost Recovery %	0%	75.0%
Total Program Cost Not Recovered	(\$2,500)	(\$625)
4) Total Program Cost Recovered	WS Best Efforts (Credits)	\$1,875 (Cash)

**Please note: the cost of insurance is never refundable or eligible for a refund when cancelling*

Key Takeaways

Simplifying faculty directed programs

- Eliminating all financial risk is not possible
- Chaos and uncertainty remain
- Included vs. Optional plan considerations
- Consider requiring students to purchase a travel protection plan

Best practices for planning 2022 programs

- Understand university/college risk profile
- Identify key stakeholders at your school
- Educate students/faculty with clear policies
- Use case studies to determine financial exposure for each program

Key consideration for education abroad teams: Managing travel protection plans, processing claims, and monitoring payouts utilizes a lot of staff time and resources